

Bock HGX7/2110-4 S (x2) deep freeze package

Specifications

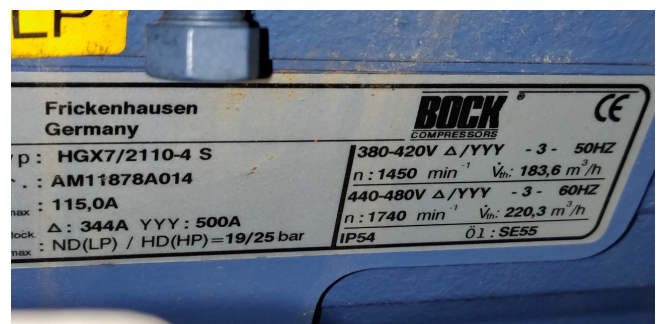
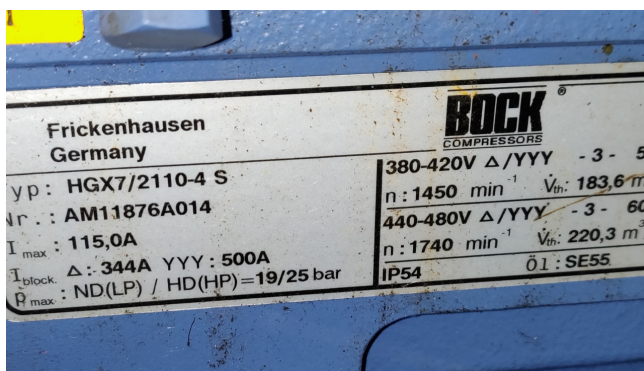
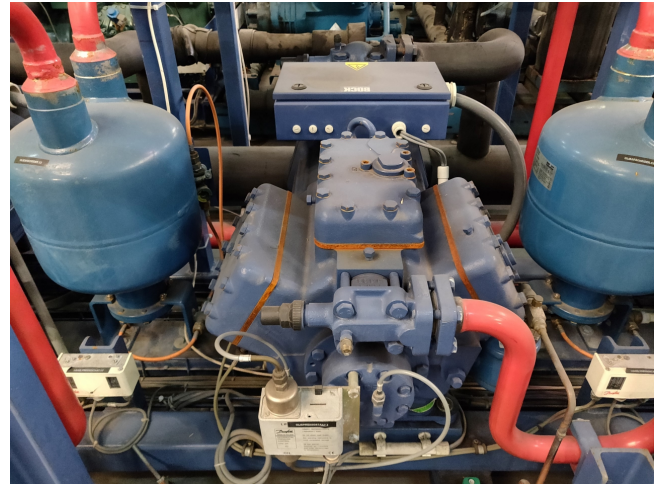
Marca	Bock
Tipo	HGX7/2110-4 S (x2) deep freeze package
Refrigerante	Freon
kW at -5°C/+40°C	226,0
kW at -10°C/+40°C	187,2
kW at -20°C/+40°C	123,6
kW at -30°C/+40°C	75,4
kW at -40°C/+40°C	39,2
kW at -45°C/+40°C	24,4
Sober Bancada	✓
Presostatos	✓
Separador de aceite	✓
Comentarios	Our capacity table is based on Manufacturer spec. We would like to know which refrigerant is in your system
Package / Rack	✓
Stock	1

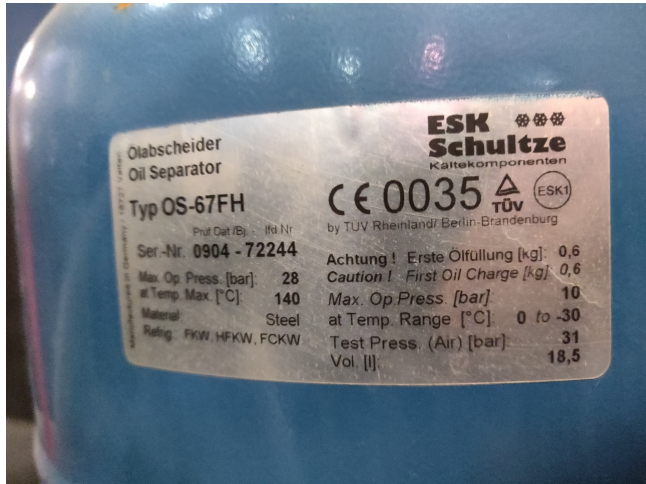


Description

Used Bock HGX7/2110-4 S (x2) deep freeze package

Used deep freeze package with 2 Bock HGX7/2110-4 S reciprocating compressors build on steel frame consisting the following elements: Oil separator, safety pressure switches, pressure gauges etc. see pictures *Why choose for HOSBV? Were not only the largest used refrigeration specialist in Europe, but also, we deliver all equipment including an extensive test, warranty and industrial cleaning. Optional we can arrange the logistics.





HGX7/2110-4 S

Engine: 380-420V YYY -3- 50Hz PW

GEA Commercial Compressors



Subject:

Performance data table

Application: Refrigeration & AC
Reference temperature: Dew point
Supply frequency: 50 Hz
Voltage: 400 V
Suction gas temperature: 20 °C
Subcooling (outside cond.): 0 K

tc [°C]		-5.0	-10.0	-15.0	-20.0	-25.0	-30.0	-35.0	-40.0	-45.0	-50.0
30.0	Q [W]	132000	110000	89500	72300	57600	44900	34200	25100	17500	
	P [kW]	40.60	37.90	34.90	31.80	28.60	25.30	22.00	18.60	15.30	
	I [A]	79.30	76.00	72.60	69.20	66.00	62.80	59.90	57.20	54.80	
35.0	Q [W]	123000	102000	83100	67100	53300	41400	31200	22400	14900	
	P [kW]	43.30	40.10	36.80	33.30	29.70	26.00	22.30	18.60	15.00	
	I [A]	82.80	78.70	74.70	70.70	67.00	63.50	60.20	57.30	54.60	
40.0	Q [W]	113000	93600	76600	61800	48900	37700	28100	19600	12200	
	P [kW]	45.80	42.20	38.40	34.50	30.50	26.50	22.50	18.50	14.60	
	I [A]	86.20	81.30	76.60	72.10	67.90	64.00	60.40	57.20	54.30	
45.0	Q [W]	104000	85500	69900	56300	44400	34000	24800	16700	9370	
	P [kW]	48.10	44.10	39.50	35.60	31.30	26.90	22.50	18.20	14.00	
	I [A]	89.40	83.80	78.40	73.30	68.60	64.30	60.40	56.90	53.90	
50.0	Q [W]	93500	77300	63100	50600	39700	30000	21400	13700		
	P [kW]	50.20	45.80	41.20	36.50	31.80	27.00	22.40	17.70		
	I [A]	92.50	86.10	80.00	74.30	69.20	64.50	60.30	56.60		

☐ Supplementary cooling or reduced suction gas temperature ($\Delta t_{oh} < 20K$)

tc: Evaporating temperature
tc: Condensing temperature
Q: Compressor refrigeration capacity
P: Power consumption
I: Current draw